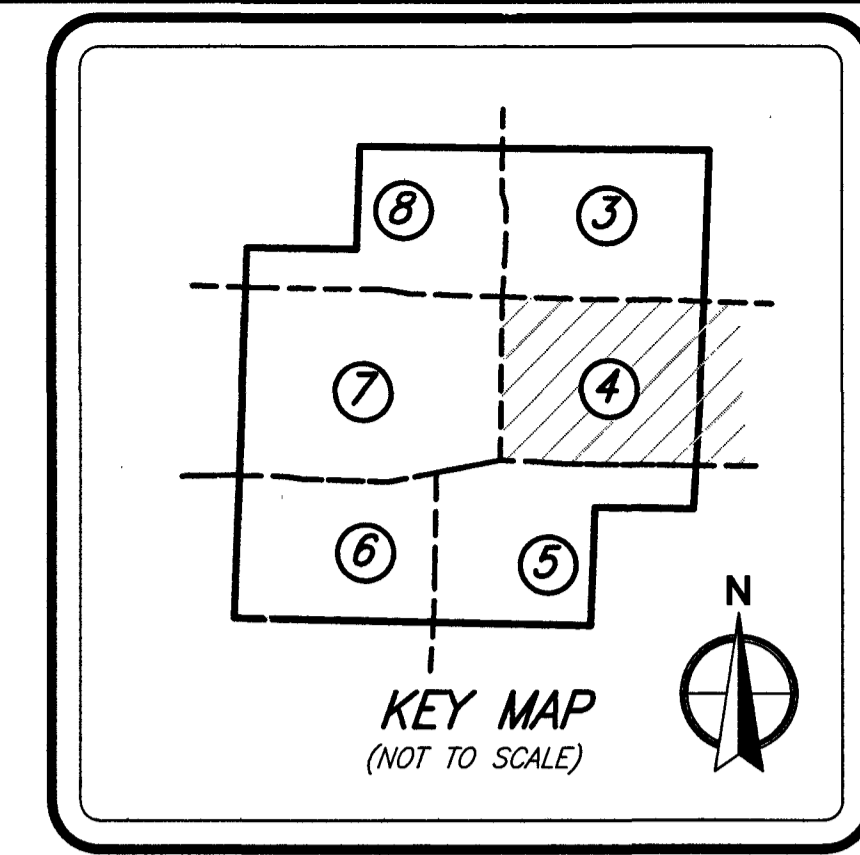


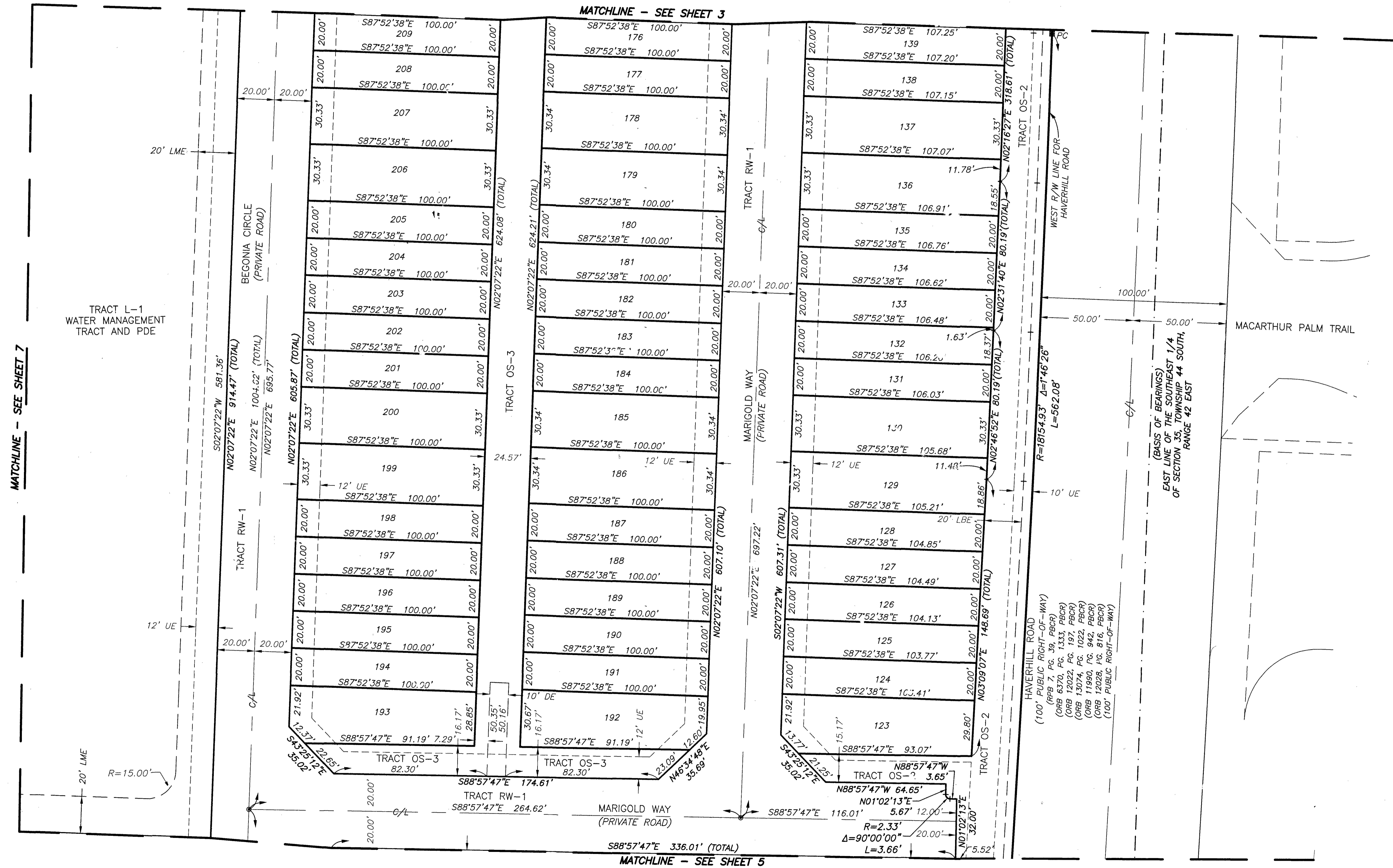
# BLOSSOM TRAIL

BEING A PARCEL OF LAND LYING WITHIN A PORTION OF THE NORTHEAST QUARTER (NE 1/4) OF THE SOUTHEAST QUARTER (SE 1/4) OF SECTION 35, TOWNSHIP 44 SOUTH, RANGE 42 EAST, CITY OF GREENACRES, PALM BEACH COUNTY, FLORIDA.



130

SHEET 4 OF 8 SHEETS



- LEGEND**
- AE = Access Easement
  - C/L = Center Line
  - CCR = Certified Corner Record
  - CONC. = Concrete
  - CB = Cord Bearing
  - CD = Cord Distance
  - Δ = Delta (Central Angle)
  - DE = Drainage Easement
  - FND. = Found
  - LSE = Lift Station Easement
  - LME = Lake Maintenance Easement
  - LMAE = Lake Maintenance Access Easement
  - L = Length of Arc
  - LBE = Landscape Buffer Easement
  - LWDD = Lake Worth Drainage District
  - NAD = North American Datum
  - (NR) = Non Radial
  - OHE = Roof Overhang Easement
  - ORB = Official Records Book
  - ⊙ = Permanent Control Point (PCP)
  - PBCR = Palm Beach County Records
  - PCN = Parcel Control Number
  - PDE = Public Drainage Easement
  - PG. = Page
  - PB = Plat Book
  - PRM = Permanent Reference Monument
  - R = Radius
  - OHE = Maintenance and Roof Overhang Easement
  - R/W = Right-of-Way
  - (TYP.) = Typical
  - UE = Utility Easement
  - = Set 4"x4" Concrete (PRM) W/Aluminum Disc Stamped "LB 7055 PRM" Unless Otherwise Noted
  - = Set Nail & Brass Disc Stamped "LB 7055 PRM" Unless Otherwise Noted



2035 Vista Parkway, West Palm Beach, FL 33411  
 Phone No. 866.909.2220 www.wginc.com  
 Cert No. 6091 - LB No. 7055  
 THIS INSTRUMENT WAS PREPARED BY KELSEY M. SMITH,  
 P.S.M. PROFESSIONAL SURVEYOR AND MAPPER,  
 LICENSE NO. 7096 FOR THE FIRM: WGI, INC.